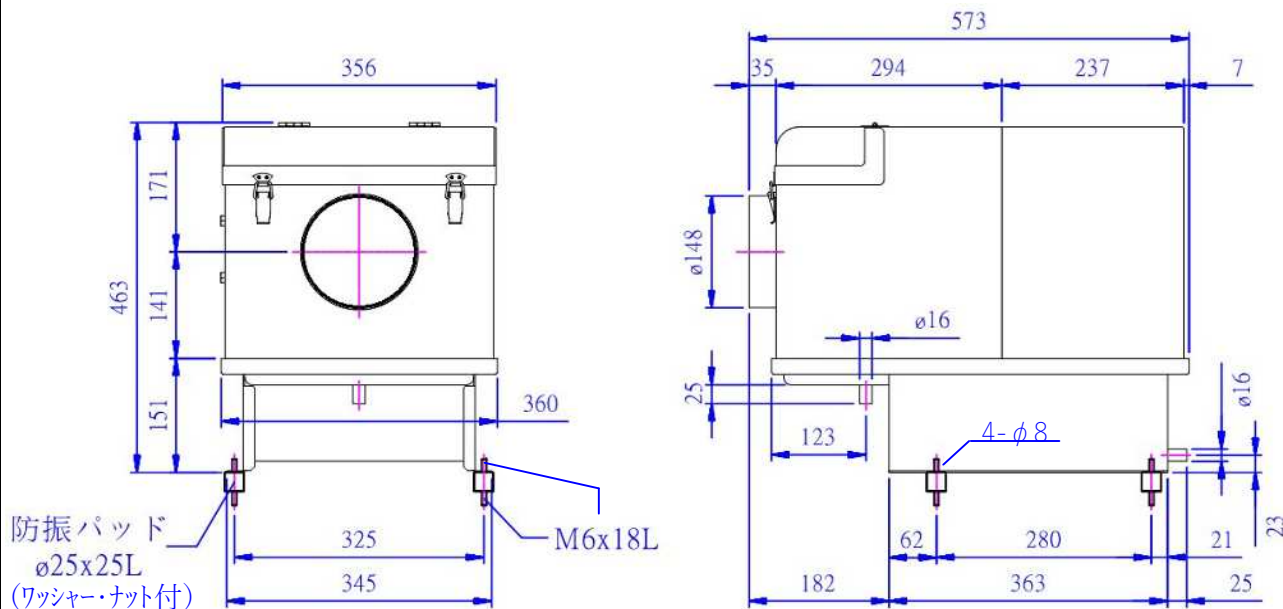


# MIST CATCHER

## MCA-07 仕様書



|                       |   |  |                                |      |      |                  |      |      |
|-----------------------|---|--|--------------------------------|------|------|------------------|------|------|
| 5                     | 重量<br>WEIGHT : 34kg   |  |                                |      |      |                  |      |      |
| 4                     | 最高吸込温度<br>INHARANT AIR TEMP. : MAX. 50°C  |  |                                |      |      |                  |      |      |
| 3                     | 風量・静圧は新品フィルタ付の性能です<br>THE FIGURE SHOWN IN PERFORMANCE INDICATES THE VALU WITH NEW FILTERS |  |                                |      |      |                  |      |      |
| 2                     | 電動機<br>MOTOR  | 保護方式<br>ENCLOSURE                        | 全閉外扇形<br>TOTALLY ENCLOSED TYPE |      |      |                  |      |      |
|                       |   | 出力<br>OUTPUT [kw]                        | 0.75                           |      |      |                  |      |      |
|                       |   | 極数・相<br>POLES PHASE                      | 2・3                            |      |      |                  |      |      |
|                       |   | 電圧<br>VOLTAGE [V]                        | 200                            |      | 220  |                  | 380  |      |
|                       |   | 周波数<br>FREQUENCY [Hz]                    | 50                             | 60   | 50   | 60               | 50   | 60   |
|                       |   | 電流<br>CURRENT [A]                        | 3.65                           | 3.47 | 3.32 | 3.15             | 1.92 | 1.82 |
| 1                     | 送風機<br>FAN  | 風量(MAX.)<br>VOLUME [m <sup>3</sup> /min] | 10.5                           | 13   | 10.5 | 13               | 10.5 | 13   |
|                       |   | 静圧(MAX.)<br>STATIC PRESSURE [kPa]        | 0.9                            | 1.3  | 0.9  | 1.3              | 0.9  | 1.3  |
|                       |   | 回転数<br>SREED [min]                       | 2850                           | 3440 | 2850 | 3440             | 2850 | 3440 |
|                       |   | 標準吸込状態<br>STANDARD SUCTION<br>CONDITION  | 温度<br>TEMPRRATURE              | 20°C |      | 相对湿度<br>HUMIDITY | 65%P |      |
| 仕 様<br>SPECIFICATIONS |   |  |                                |      |      |                  |      |      |